



BEVERAGE-AIR

| | |
|-----------------|------|
| Project: _____ | AIA# |
| Item: _____ | |
| Location: _____ | SIS# |
| Approved: _____ | |

DW64HC DEEP WELL SERIES: HORIZONTAL BOTTLE COOLERS

HORIZONTAL BOTTLE COOLERS

DW64HC Frosty Brew Deep Well Series
Hydrocarbon Series



MODEL:
DW64HC-B-29



5 Year Parts/Labor Warranty Available
7 Year Compressor Warranty

CABINET CONSTRUCTION

- Exterior features durable black painted steel
- Galvanized steel interior and floor
- Full electronic control
- Tops include easy glide, stainless steel lids (2)
- Stainless steel countertop with integral glass stops
- Four (4) epoxy coated adjustable wire dividers
- Bottle opener and cap catcher standard
- Constructed with high cooling RPM fans to provide fast cooling

OPTIONS & ACCESSORIES

- 3 Year parts/labor standard, additional 2 year warranty available
- Stainless steel interior
- Wire divider
- Lid locks
- 3" Casters or 6" adjustable leg with plate
- Remote option* (see note on back on page)

REFRIGERATION SYSTEM

- Refrigeration system uses R290 refrigerant to comply with all environmental concerns
- Automatic, non-electric defrost
- Epoxy coated evaporator coil
- Forced air refrigeration system holds product between 30°-32°F



Please verify qualifying units by visiting:
www.energystar.gov/cfs

3779 Champion Blvd., Winston-Salem, NC 27105
1-888-845-9800 Fax: 1-336-245-6453
Beverage-Air.com Sales@bevair.com



BEVERAGE-AIR

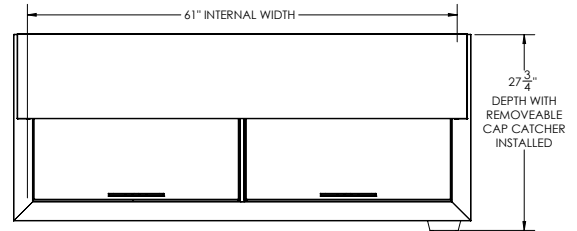
| MODEL | DW64HC-B-29 |
|--------------------------------------|--------------|
| EXTERNAL DIMENSIONAL DATA | |
| Width Overall | 65" |
| Depth Overall | 26 1/2" |
| Depth Overall with Cap Catcher | 27 3/4" |
| Height Overall | 33 3/4" |
| Number of Lids | 2 |
| INTERNAL DIMENSIONAL DATA | |
| NET Capacity (cubic ft.) | 18.5 |
| Internal Width Overall (in) | 61" |
| Internal Depth Overall (in) | 22 3/4" |
| Internal Height Overall at Step (in) | 15 1/2" |
| Internal Height Overall (in) | 26 3/4" |
| Number of Dividers | 4 |
| 12 oz. Bottle Capacity | 25 1/4 Cases |
| 12 oz. Can Capacity | 34 3/4 Cases |
| ELECTRICAL DATA | |
| Full Load Amperes | 2.5 |
| REFRIGERATION DATA | |
| Horsepower | 1/4 |
| Capacity (BTU/Hr) | 1702 |
| Heat Rejection (BTU/Hr) | 2553 |
| Charge (lbs/grams) | 0.2314/105 |
| SHIPPING DATA | |
| Gross Weight - Crated | 332 lbs |
| Height - Crated | 41" |
| Width - Crated | 68" |
| Depth - Crated | 30" |

*NOTE: Remote units are field wired and come with 6" legs.
Refrigerant must be specified at time of order.

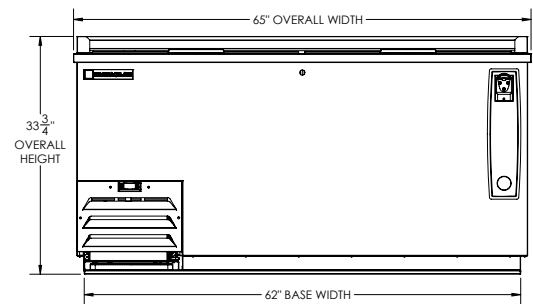
FROSTY BREW Horizontal Bottle Coolers - Deep Well Model: DW64HC-B-29

Model Views

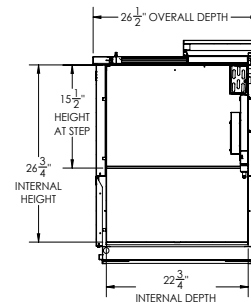
Required Clearance: 3" Left Side & Back



PLAN VIEW



ELEVATION VIEW



SIDE VIEW



ELECTRICAL CONNECTION



115/60/1
NEMA 5-15P

Unit pre-wired at factory
and include 8' long cord
and plug set.